

TUP4 Nylon Through Anchor



ICCONS®
Serious Connections

Autoclaved Aerated Concrete (AAC)

TDS | 1041.2

FRÜLSIDER
YOUR FIXING FACTORY

TUP4



Part No.	Description	Drill Diameter (mm)	Min. Anchor Embedment (mm)	Max. Fixture Thickness (mm)	Suits screw size (mm)
FTUP408080	8 x 80mm (64100008080)	8	70	10	5.5 - 6
FTUP410100	10 x 100mm (64100010100)	10	70	30	7

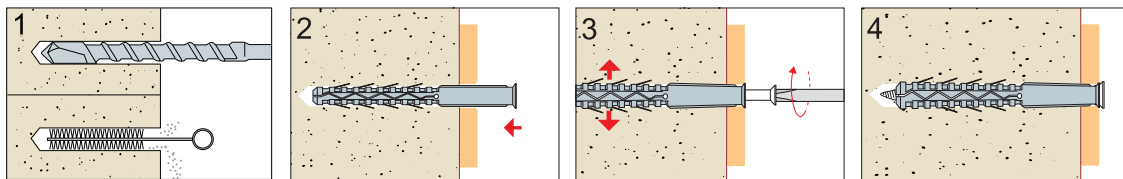
Recommended ⁽¹⁾ Loads in Autoclaved Aerated Concrete (AAC) (≥ 2.5 MPa)

Anchor size		Ø 8x80	Ø 10x100
Nominal embedment depth	h_{nom} (mm)	70	70
Single anchor with Large anchor spacing and edge distances in Aerated Concrete ≥ 2.5 MPa	Tensile N (kN)	0.31	0.31
	Shear V (kN)	0.7	0.8

1kN \approx 100 kgf

⁽¹⁾ The recommended loads are derive from the mean ultimate loads and are inclusive of the total safety factor $\gamma=6$.

Installation



Autoclaved Aerated Concrete (AAC)

Autoclaved Aerated Concrete (AAC) such as CSR Hebel® products are manufactured from sand, lime and cement to which a gas-forming agent is added. The liberated gas expands the mixture, forming extremely small, finely dispersed air pockets, resulting in lightweight aerated concrete. AAC products are innovative and environmentally preferable building materials. This is due to their lightweight nature, excellent thermal, fire and acoustic properties and design versatility. These inherent properties of AAC products help achieve quick and cost efficient construction practices as well as providing for comfortable operating environments inside buildings all year round.

Selecting the correct fixing for AAC material is very important and depends on application, loading requirements, fixing head style and material finish. The CSR Hebel® selection guide below provides some guidance for the correct fixing selection however due to continual base material and fixing development also refer to ICCONS for further guidance of suitable fixings for AAC.

Selection of Grade of Fixing

Grade of Fixing	Application	Working Permissible Loads	
		Load (kN)	Approx. Load (kg)
Light Duty	Skirting, Coat hooks, small light fittings, towel rails, mirrors picture & painting hangings, pipe brackets, carpet smooth edge	< 0.2	~ 20
Medium Duty	Mirrors, large light fittings, door & window framing, plasterboard, shelving, light weight cupboards & fittings, meter box, tool rack, curtain tracks & rods, towel rails	0.2 - 0.5	20 - 50
Heavy Duty	Grab rails, hand rails cisterns, clothes dryers, hand basin, sinks, heavy cupboards	0.5 - 2.0	50 - 200

Extract from CSR Hebel® Technical Manual Part 5: Proprietary Fixings & Brackets and Surface Finishes – Section 8.1